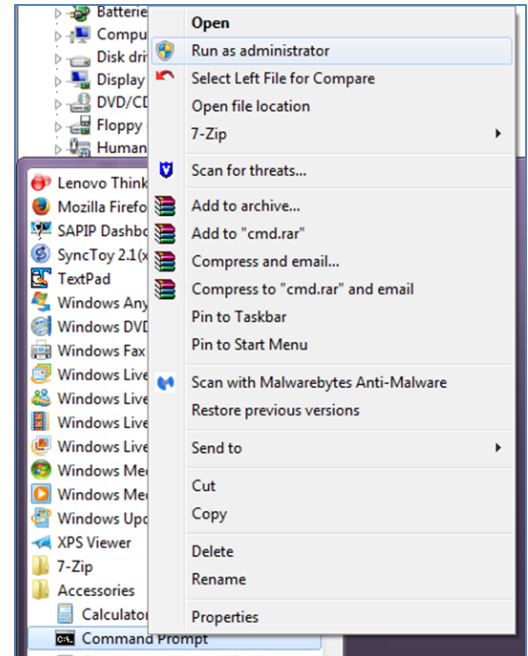


How to Clear COM Port List

— When COM port number reaches 256

- Log in your PC as administrator.
- From START menu, right click “Command Prompt” and select “run as administrator” option.
- Command Prompt window opens.

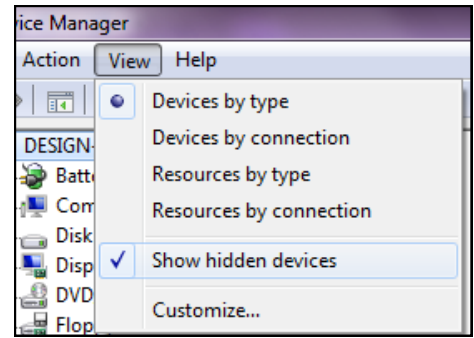


- In Command Prompt, type “set devmgr_show_nonpresent_devices=1”, hit ENTER.
- Then type “Start devmgmt.msc”, hit ENTER.
- Device Manager window opens.

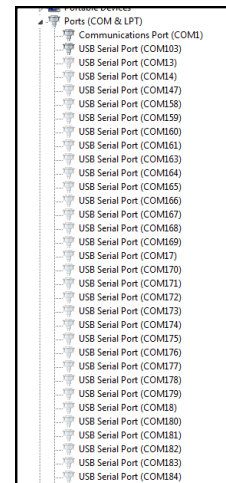
```
C:\> Administrator: Command Prompt
Microsoft Windows [Version 6.1.7601]
Copyright (c) 2009 Microsoft Corporation. All rights reserved.

C:\Windows\system32>set devmgr_show_nonpresent_devices=1
C:\Windows\system32>start devmgmt.msc
```

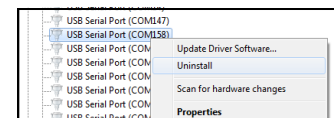
- Click “View” in the menu and select “Show hidden devices”.



- Expand “Ports” to list all COM ports used.



- Right click on one of the **greyed out** ports and select “Uninstall”.



- In the popup window, **DO NOT** check “delete the driver software for this device” box.
- Click “OK” button.
- The unused COM port is removed.
- Repeat the steps until all **greyed out** COM ports are removed.

