

HPFM-GEN3 Software update

This new version of the HPFM-GEN3 software fixes a bug that doesn't allow customers to find previous projects dated AFTER 12/31/2020.

PLEASE SAVE THE FOLLOWING FOLDERS BEFORE INSTALLING THE NEW UPDATED SOFTWARE:

Go to Programs(x86)-Dynamax-HPFM: Save the following folders on your desktop temporary

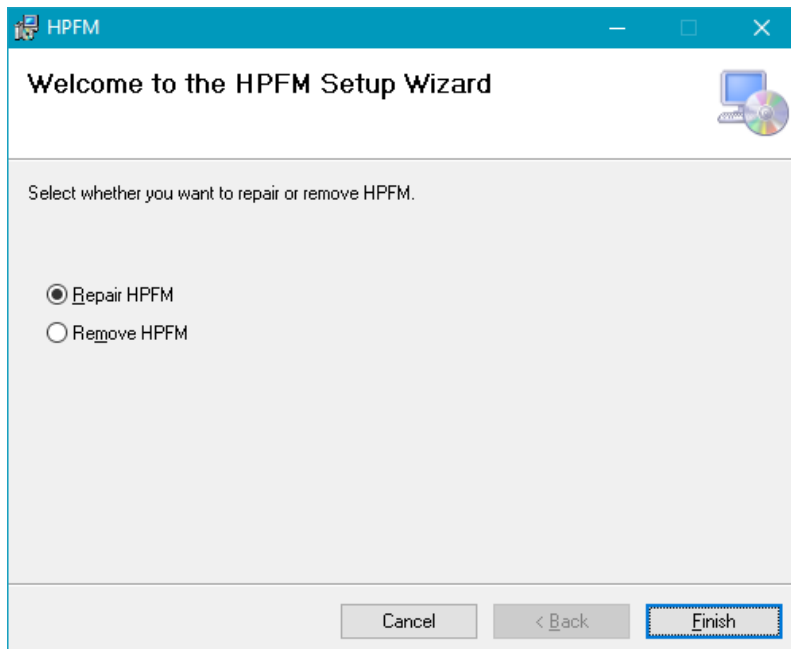
Archive, Calibration, Data Log and the HPFM.ini file.

Name	Date modified	Type	Size
Archive	4/13/2021 11:40 AM	File folder	
Calibration	1/30/2020 5:01 PM	File folder	
Data Log	3/23/2021 4:20 PM	File folder	
HPFM.ini	4/13/2021 11:36 AM	Configuration sett...	2 KB

The new software update will create new folders and erase all of the documents and files in HPFM folder.

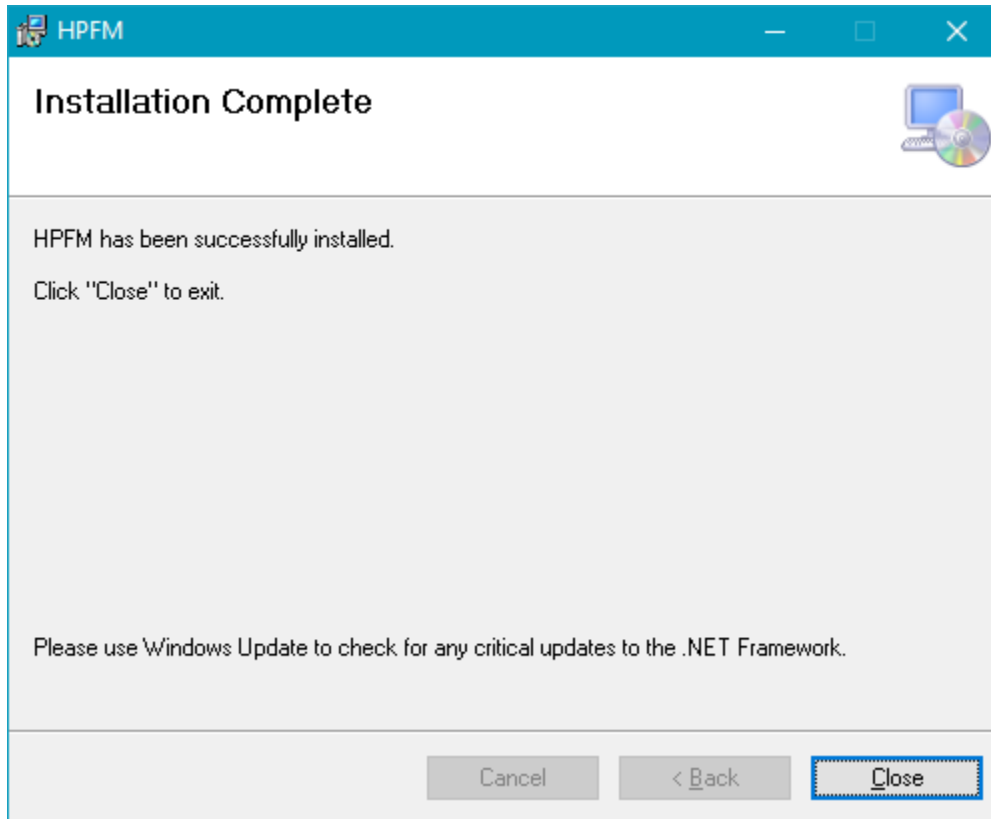
Open the HPFM-DateUpdate.zip folder and run the HPFMSetup.msi.

I will prompt you to either Repair or Remove HPFM software.



You can select Repair HPFM and click Finish.

It will quickly install the software, it will show that it has successfully installed.



Click Close

Go ahead and move the temporary folders you saved back to the HPFM folder in your Programs folder.

If prompted to override existing files, click yes.

Open the HPFM software and you'll hear the beep as it will try and detect the Keylock. If found it will open the software.

Go to settings tab and compare the default settings compared to your settings. (Some customers experienced having all settings being blank)

The screenshot shows a 'Settings' dialog box with the following fields and values:

Field	Value
COM Port Name:	COM1
Baud Rate:	2400
Data Bits:	7
Parity:	None
Stop Bits:	One
LFCR:	TRUE
ESC:	TRUE
DTR:	TRUE
Command:	P
Data Log Path:	C:\Program Files (x86)\Dynamax\HPF
Archive Path:	C:\Program Files (x86)\Dynamax\HPF
Project Path:	C:\Users\Sergio\Documents\HPFM-F
Calibration Path:	C:\Program Files (x86)\Dynamax\HPF
P1 Max:	560
DP Max:	200
Green Flow Max:	1.4E-06
Orange Flow Max:	3.7E-06
Red Flow Max:	1.7E-05
Yellow Flow Max:	3.6E-05
Gray Flow Max:	0.000105
Brown Flow Max:	0.0008

Buttons: Save, Cancel